

The Old Classics

Higher Nimbers in Pawn Endgames on Large Chessboards

NOAM D. ELKIES

*Do *2, *4 and higher Nimbers occur on the 8×8 or larger boards?*
— ONAE [Elkies 1996, p. 148]

It's full of stars!
— 2001: A Space Odyssey [Clarke 1968, p. 193]

ABSTRACT. We answer a question posed in [Elkies 1996] by constructing a class of pawn endgames on $m \times n$ boards that show the Nimbers $*k$ for many large k . We do this by modifying and generalizing T.R. Dawson's "pawns game" [Berlekamp et al. 1982]. Our construction works for $m \geq 9$ and n sufficiently large; on the basis of computational evidence we conjecture, but cannot yet prove, that the construction yields $*k$ for all integers k .

1. Introduction

In [Elkies 1996] we showed that certain chess endgames can be analyzed by the techniques of combinatorial game theory (CGT). We exhibited such endgames whose components show a variety of CGT values, including integers, fractions, and some infinite and infinitesimal values. Conspicuously absent were the values $*k$ of Nim-heaps of size $k > 1$. Towards the end of [Elkies 1996] we asked whether any chess endgames, whether on the standard 8×8 chessboard or on larger rectangular boards, have components equivalent to $*2$, $*4$ and higher Nimbers. In the present paper we answer this question affirmatively by constructing a new class of pawn endgames on large boards that include $*k$ for many large k , and conjecture — though we cannot yet prove — that all $*k$ arise in this class.

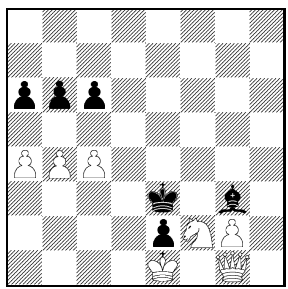
Our construction begins with a variation of a pawns game called "Dawson's Chess" in [Berlekamp et al. 1982]. In §3 we introduce this variation and show that, perhaps surprisingly, all quiescent (non-entailing) components of the modified game are equivalent to Nim-heaps (Theorem 1). We then determine the

value of each such component, and characterize non-loony moves (Theorem 2). In § 4 we construct pawn endgames¹ on large chessboards that incorporate those components. These endgames do not yet attain our aim, because the values determined in Theorem 2 are all 0 or *1. In § 5 we modify one of our components to obtain *2. In § 6 we further study components modified in this way, showing that they, too, are equivalent to Nim-heaps (Theorem 3). We conclude with the numerical evidence suggesting that all Nim-heaps can be simulated by components of pawn endgames on large rectangular chessboards.

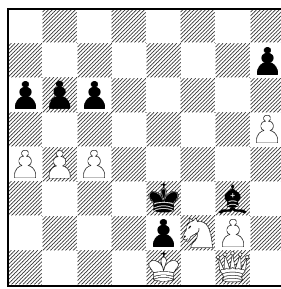
Before embarking on this course, we show in § 2 a pair of endgames on the standard 8×8 board in the style of [Elkies 1996] that illustrate the main ideas, specifically the role of “loony moves”. Readers who are much more conversant with CGT than with chess endgames will likely prefer to skim or skip § 2 on first reading, returning to it only after absorbing the theory in § 3. Conversely, chessplayers not fluent in CGT will find in § 2 motivation for the CGT ideas central to § 3 and later sections.

2. An Illustrative Pair of Endgames

We introduce the main ideas of our construction by analyzing the following pair of composed endgames on the standard 8×8 chessboard:²



Diag. 1A: whoever moves loses



Diag. 1B: whoever moves wins

Diagram 1A consists of two components. On the Kingside, seven men are locked in a mutual Zugzwang that we already used in [Elkies 1996]. Both sides can legally move in the Kingside, but only at the cost of checkmate (Qh1(2) Bxf2) or ruinous material inferiority. Thus the outcome of Diagram 1A hinges on the Queenside component, with three adjacent pawns on each side. We have

¹More precisely, King-and-pawn endgames; the first two words are usually suppressed because every legal chess position must have a White and a Black King.

²These are not pawn endgames, but all units other than pawns are involved in the Kingside Zugzwang, and are thus passive throughout the analysis. We can construct plausible positions where that Zugzwang, too, is replaced by one using only Kings and pawns, but only at the cost of introducing an inordinate number of side-variations tangential to the CGT content of the positions. For instance, replace files e–g in Diag. 1A by White Kg1, Ph2 and Black Kh3, Pg2; in Diag. 1B, do the same and move the h5/h7 pawns to e3/e5.

not seen such a component in [Elkies 1996], but it turns out to be a mutual Zugzwang: whichever side moves first, the opponent can maneuver to make the last pawn move on the Queenside, forcing a losing King move in the Kingside component. Thus³ a5 can be answered by bxa5 bxa5 c5, likewise c5 by bxc5 bxc5 a5, and b5 by axb5 axb5 c5. In this last line, it is no better to answer axb5 with cxb5, since then c5 wins: if played by Black, White will respond a5 and promote first, but Black c1Q will be checkmate; while if White plays c5 and Black answers a5, White replies c6 and promotes with Black's pawn still two moves away from the first rank, winning easily.⁴ Note the key point that a5 or c5 must not be answered by b5?, since then c5 (resp. a5) transfers the turn to the second player and wins — but not cxb5? cxb5 (or axb5? axb5), regaining the Zugzwang.

Diagram 1B is Diag. 1A with the h5 and h7 pawns added; these form an extra component which we recognize from [Elkies 1996] as having the value *. Thus we expect that Diag. 1B is a first-player win, and indeed either side can win by playing h6, effectively reducing to Diag. 1A. The first player can also win starting on the Queenside: a5 bxa5 bxa5 (* + * = 0), and likewise if a5 is answered by b5 (c:b5 etc. wins, but not c5? h6). The first player must not, however, start b5?, when the opponent trades twice on b5, in effect transforming * + * into 0 + *, and then wins by playing h6.

Note the role of the move b5 in the analysis of both Diagrams 1A and 1B. In the terminology of [Berlekamp et al. 1982], this is an “entailing move”: it makes a threat (to win by capturing a pawn) that must be answered in the same component. But, whether the rest of the position has value 0 (Diag. 1A) or * (Diag. 1B), the move b5 loses, because the opponent can answer the threat in two ways, one of which passes the turn back (advancing the threatened pawn to a5 or c5), one of which in effect retains the turn (capturing on b5, then making another move after the forced re-capture). Since the first option wins if the rest of the position has value 0, and the second wins if the rest of the position has value * (or any other nonzero Nimber), b5 is a bad move in either case. In [Berlekamp et al. 1982] such an unconditionally bad move is called “loony” (see p. 378). Since b5 is bad, it follows in turn that, in either Diag. 1A or 1B, the

³Note that we do not specify whether White or Black begins the sequence. Fortunately the algebraic chess notation for these moves, and for most of the pawn moves that occur in this paper, is the same whether they are played by White or Black. When we exploit this circumstance, we refrain from the usual practice giving move numbers, which would specify who made which move: White begins 1 a5 bxa5 2 bxa5 c5, while Black begins 1... a5 2 bxa5 bxa5 3 c5.

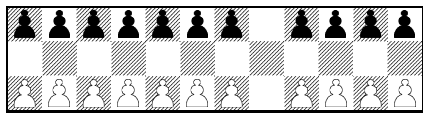
⁴This part of the analysis explains why we chose this Kingside position from [Elkies 1996]: the position of White's King, but not Black's, on its first rank makes it more vulnerable to promoted pawns, exactly compensating for the White pawns being a step closer to promotion than Black's. In [Elkies 1996] this Kingside Zugzwang had the Kings on f1 and f3, not e1 and e3; here we shifted the position one square to the left so as not to worry about a possible White check by a newly promoted Queen on a8. Thus 1 b5 can be answered by 1... cxb5 as well as 1... axb5.

entailing move $a5$ may be regarded as the non-entailing “move” consisting of the sequence $a5 \ bxa5 \ bxa5$: the only other reply to $a5$ is $b5$, which is loony and so can be ignored.

We next show that this analysis can be extended to similar pawn configurations on more than three adjacent files. We begin our investigation with a simplified game involving only the relevant pawns.

3. A Game of Pawns

3.1. Game Definition. Our game is played on a board of arbitrary length n and height 3. At the start, White pawns occupy some of the squares on the bottom row, and Black pawns occupy the corresponding squares on the top row. For instance, Diag. 2 shows a possible starting position on a board with $n = 12$:

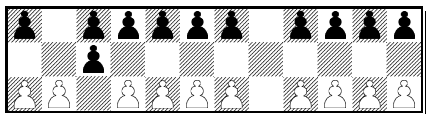


Diag. 2: A starting position

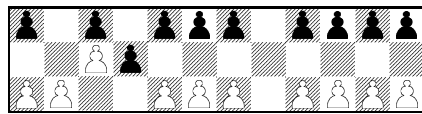
The pawns move and capture like chess pawns, except that there is no double-move option (and thus no *en passant* rule). Thus if a file contains a White pawn in the bottom row and a Black pawn in the top row, these pawns were there in the initial position and have not moved; we call such a file an “initial file”.

White wins if a White pawn reaches the top row, and Black wins if a Black pawn reaches the bottom row. Thus there is no need for a promotion rule because whoever could promote a pawn immediately wins the game. But it is easy enough to prevent this, and we shall assume that neither side allows an opposing pawn to reach its winning row. The game will then end in finitely many moves with all pawns blocked, at which point the winner is the player who made the last move. We shall sometimes call this outcome a “win by Zugzwang”, as opposed to an “immediate win” by reaching the opposite row.

For instance, from Diag. 2 White may begin $1 \ c2$. Since this threatens to win next move by capturing on $b3$ or $d3$, Black must capture the $c2$ -pawn; if Black captures with the b -pawn, we reach Diag. 3A. Now Black threatens to win by advancing this pawn further, so White must capture it; but unlike Black’s capture, White’s can only be made in one way: if $2 \ dxc2?$, threatening to win with $3 \ cxd3$, Black does not re-capture but instead plays $d2$, producing Diag. 3B.

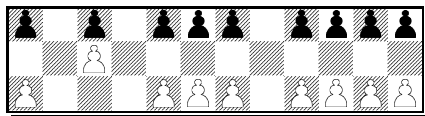


Diag. 3A: After $1 \ c2 \ bxc2$

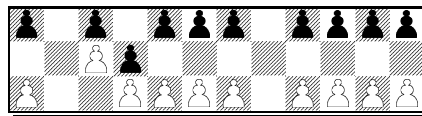


Diag. 3B: If then $2 \ dxc2? \ d2$, winning

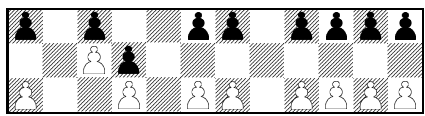
Black then wins, since touchdown at d1 can only be delayed by one move with 3 exd2 exd2 (but not 3... cxd2??, when 4 c3 wins instead for White!), and then 4... d1.



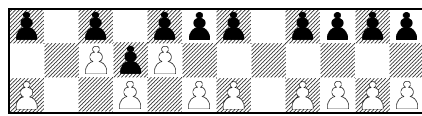
Diag. 3C: After 2 bxc2 dxc2 3 dxc2



Diag. 3D: Instead 2... d2



Diag. 3E: Then 3 exd2 exd2



Diag. 3F: or 3 e2

Thus White must play 2 bxc2 from Diag. 3A. This again threatens to win with 3 cxd3, so Black has only two options. One is to re-capture with 2... dxc2, forcing White in turn to re-capture: 3 dxc2, reaching Diag. 3C. Alternatively, Black may save the d3-pawn by advancing it to d2 (Diag. 3D). This forces White to move the attacked pawn at e1. Again there are two options. White may capture with 3 exd2, forcing Black to reply 3... exd2 (Diag. 3E), not cxd2? when White wins immediately with 4 c3. Alternatively White may advance with 3 e2 (Diag. 3F), when Black again has two options against 4 exf3, etc. Eventually the skirmish ends either with mutual pawn captures (as in Diag. 3C or 3E) or when the wave of pawn advances reaches the end of the component (3... f2 4 g2), leaving one side or the other to choose the next component to play in.

As noted in the Introduction, this game is reminiscent of the game called “Dawson’s Chess” in [Berlekamp et al. 1982, pp. 88 ff.]; the only difference is that in Dawson’s Chess a player who can capture a pawn must do so, while in our game, as in ordinary chess, captures are optional.⁵ Because of the obligation to capture, Dawson’s Chess may appear to be an entailing game, but it is quickly seen to be equivalent to a (non-entailing) impartial game, called “Dawson’s Kayles” in [Berlekamp et al. 1982]. Our game also has entailing moves, and features a greater variety of possible components; but we shall see that it, too, reduces to a non-entailing impartial game once we eliminate moves that lose immediately and loony moves.

⁵Since Dawson was a chess problemist, we first guessed that the game analyzed here was Dawson’s original proposal, before the modification in [Berlekamp et al. 1982]. But in fact R.K. Guy reports in a 16.viii.1996 e-mail that Dawson did want obligatory captures but proposed a *misère* rule (last player loses). Guy also writes: “I am aware of some very desultory attempts to analyze the game in which captures are allowed, but little was achieved, to my knowledge.” I thank Guy for this information, and John Beasley who more recently sent me copies of pages from the 12/1934 and 2/1935 issues of *The Problemist Fairy Supplement* in which Dawson proposed and analyzed his original game.

3.2. Decomposition into Components. We begin by listing the possible components. We may ignore any files in which no further move may be made. These are the files that are either empty (such as the h-file throughout Diag. 3, the b-file in Diag. 3C–3F, and the d- and e-files in 3C and 3E respectively) or closed. We say a file is “closed” if it contains one pawn of each color, neither of which can move or capture (the c-file in 3C–3F and the d-file in 3E–3F). One might object that such a currently immobile pawn may be activated in the future; for instance in Diagram 3D if White plays 3 exd2 then the dormant c-file may awake: 3...cxd2. But we observed already that this Black move loses immediately to 4 c3. Since we may and do assume that immediately losing moves are never played, we may ignore the possibility of 3...cxd2?, and regard the c-file in Diag. 3D and the d-file in Diag. 3F as permanently closed.

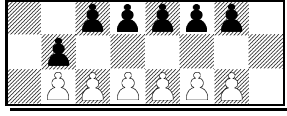
By discarding empty or closed files we partition the board into components that do not interact except when an entailing move requires an answer in the same component. Thus at each point there can be at most one entailing component (again assuming no immediately losing moves). We next describe all possible components and introduce a notation for each.

A non-entailing component consists of m consecutive initial files, for some positive integer m . We denote such a component by $[m]$. For instance, Diag. 3A is $[7] + [4]$; Diag. 3C is $[1] + [3] + [4]$; and Diag. 3E is $[1] + [2] + [4]$. An entailing component contains a pawn that has just moved (either vertically or diagonally) to the second rank, threatening an immediate win, and can be captured. We denote this pawn’s file by “:”. There are four kinds of entailing component, depending on whether this pawn can be captured in one or two ways and on how many friendly pawns defend it by being in position to re-capture.

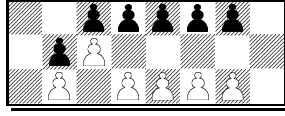
- If the pawn is attacked once and defended once, then the attacking and defending pawns are on the same file (else the side to move can win immediately as in Diag. 3B). Thus the “:” file is at the end of a component each of whose remaining files is initial. We denote the component by $[:m]$, where m is the number of initial files in the component. For instance, Diag. 4A shows $[:5]$. For the mirror-image of “ $[:m]$ ”, we use either the same notation or “ $[m:]$ ”. Either side can move from $[m+1]$ to $[:m]$ by moving the left- or rightmost pawn. Faced with $[:m]$, one must move the attacked pawn, either by capturing the “:” pawn or by advancing it. Advancing yields $[:(m-1)]$ (see Diag. 4B), unless $m = 1$ when the advance yields 0 since all files in the component become blocked. Capturing yields $[:]+[m-1]$ (see Diag. 4C), where $[:]$ is the the component defined next.

- If the pawn is attacked once and not defended, then it has just captured, and is subject to capture from an unopposed pawn. We denote the file with one unopposed pawn by “.”. The capture is obligatory, and results in a closed file. Therefore the adjacent “:” and “.” files do not interact with any other components, even if they are not yet separated from them by empty or closed files. We may thus regard these files as a separate component $[:.]$, which entails a

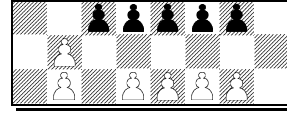
move to 0. For instance, files b, c in Diag. 4C constitute $[:.]$, which is unaffected by the $[4]$ on files d through g .



Diag. 4A: $[:5]$



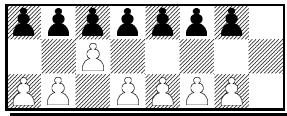
Diag. 4B: $[:4]$



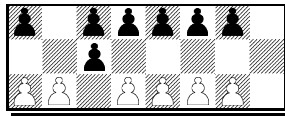
Diag. 4C: $[:.]+[4]$

- If the pawn is attacked twice and defended twice, then the component of the “.” file consists of that file, m initial files to its left, and m' initial files to its right, for some positive integers m and m' . We denote such a component by $[m:m']$. For instance, Diag. 5A shows $[2:4]$. We already encountered this component after the move $c2$ from Diag. 2. The component $[m:m']$ entails a capture of the “.” pawn. This yields either $[m-1]+[:m']$ or $[:m]+[m'-1]$, where $[:m]$, defined next, is our fourth and last kind of entailing component, and $[m-1]$ (or $[m'-1]$) is read as 0 if $m=1$ (resp. $m'=1$).

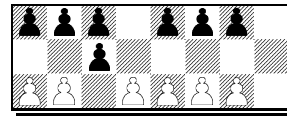
- If the pawn is attacked twice and defended once, then it is part of a component obtained from $[:.]$ by placing m initial files next to the “.” file, for some positive integer m . Naturally we call such a component $[:m]$ (or $[m:.]$). As explained in the paragraph introducing $[:.]$, an initial file next to the “.” file cannot interact with it, and thus belongs to a different component. For instance, the two possible captures from $[2:4]$ yield $[1]+[:4]$ (Diag. 5B, also seen in Diag. 3A) and $[2:.]+[3]$ (Diag. 5C). Faced with $[:m]$, one has a single move that does not lose immediately: capture with the “.” pawn, producing $[m]$, as seen earlier in connection with Diag. 3C.



Diag. 5A: $[2:4]$



Diag. 5B: $[1]+[:4]$



Diag. 5C: $[2:.]+[3]$

We summarize the available moves as follows. It will be convenient to extend the notations $[m]$, $[:m]$, $[.m]$, $[m:m']$ by allowing $m=0$ or $m'=0$, with the understanding that

$$[0] = [:0] = [0:0] = 0, \quad [.:0] = [:.], \quad [m:0] = [0:m] = [m].$$

We then have:

- From $[m]$, either side may move to $[m_1:m_2]$ for each $m_1, m_2 \geq 0$ such that $m_1 + m_2 = m - 1$.
- If $m > 0$ then $[:m]$ entails a move to either $[:.] + [m-1]$ or $[:(m-1)]$.
- $[.m]$ entails a move to $[m]$. In particular (taking $m=0$), $[:.]$ entails a move to $[0] = 0$.

- If $m, m' > 0$ then $[m : m']$ entails a move to either $[m - 1] + [.:m']$ or $[m' - 1] + [.:m]$.

For instance, Diag. 3D shows $[1] + [.:3] + [4]$, moving either to $[1] + [.:] + [2] + [4]$ and thence to $[1] + [2] + [4]$ (Diag. 3E), or to $[1] + [.:2] + [4]$ (Diag. 3F).

Our list of possible moves confirms that $[m]$, $[.:m]$, $[.:]$, $[.:m]$, $[m:m']$ are the only possible components: the initial position is a sum of components $[m_i]$, and each move from a known component that does not concede an immediate win yields a sum of 0, 1, or 2 known components.

3.3. Analysis of Components. Since in each component both sides have the same options, we are dealing with an *impartial* entailing game. We could thus apply the theory of such games, explained in [Berlekamp et al. 1982], to analyze each component. But it turns out that once we eliminate loony moves the game is equivalent to an ordinary impartial game, and thus that each component $[m]$ is equivalent to a Nim-heap of size depending on m .

Consider the first few m . Clearly $[1]$ is equivalent to $*1$, a Nim-heap of size 1. At the end of §2 we have already seen in effect that a move from $[2]$ to $[.:1]$ is loony: if the rest of the game has value 0, then the reply $[.:1] \rightarrow 0$ wins; otherwise, the reply $[.:1] \rightarrow [.:]$ forces $[.:] \rightarrow 0$, again leaving a forced win in the sum of the remaining components. (In particular, $[2]$ is mutual Zugzwang, equivalent to 0.) Thus also $[3] \rightarrow [1:1]$ is loony, because the forced continuation $[1:1] \rightarrow [.:1] \rightarrow [.:1]$ again leaves the opponent in control. On the other hand, $[3] \rightarrow [.:2]$ is now seen to force $[.:2] \rightarrow [.:] + [1]$, since the alternative $[.:2] \rightarrow [.:1]$ is known to lose. We thus have the forced combination $[3] \rightarrow [.:2] \rightarrow [.:] + [1] \rightarrow [1]$, which amounts to a “move” $[3] \rightarrow [1]$.⁶ Moreover, we have shown that this is the only reasonable continuation from $[3]$. Since $[1] \cong *1$, we conclude that $[3]$ is equivalent to a Nim-heap of size $\text{mex}(\{1\}) = 0$, i.e. a mutual Zugzwang, as we already discovered in the analysis of Diags. 1A, 1B.

What of $[4]$ and $[5]$? From $[4]$, there are again two options, one of which can be eliminated because it leads to the loony $[.:1]$, namely $[4] \rightarrow [2:1]$ (after $[2:1] \rightarrow [1] + [.:1] \rightarrow [1] + [.:1]$). This leaves $[4] \rightarrow [.:3]$, which in turn allows two responses. One produces the sequence $[4] \rightarrow [.:3] \rightarrow [2] + [.:] \rightarrow [2]$, resulting in a value of 0. The other response is $[4] \rightarrow [.:3] \rightarrow [.:2]$, which we already know forces the further $[.:2] \rightarrow [.:] + [1] \rightarrow [1] \cong *1$. In effect, the response to $[4] \rightarrow [.:3]$ can interpret the move either as $[4] \rightarrow [2] \cong 0$, or as $[4] \rightarrow [1] \cong *1$ *with the side who played $[4] \rightarrow [.:3]$ on move again*. We claim that the latter option can be ignored. The reason is that the first interpretation wins unless the remaining components of the game add to 0; but then the second interpretation leaves the opponent to move in a nonzero position, and thus also loses. We conclude that $[4]$ is equivalent

⁶Here and later, we use an arrow “ \rightarrow ” for a single move, and a long arrow “ \longrightarrow ” for a sequence of 3, 5, 7, ... single entailing moves considered as one “move”.

to an impartial game in which either side may move to 0, and is thus equivalent to a Nim-heap of size $\text{mex}(\{0\}) = 1$. As to [5], there are now three options, only one excluded by [:1], namely [5]→[3:1]. The option [5]→[2:2] (move the center pawn) forces the continuation [2:2]→[1]+[:2]→[1]+[:2]→[1]+[:]+[1]→[1]+[1], and is thus tantamount to [5] → [1] + [1] ≅ 0. This leaves [5]→[:4], which we show is loony for a new reason. One continuation is [:4]→[:]+[3]→[3], interpreting the move as [5] → [3] ≅ 0. The other is [:4]→[:3], which as we have just seen is equivalent to [:4]→[2]. Since [2] ≅ 0, this continuation interprets [5]→[:4] as a move to 0 followed by an extra move. Thus a move to [:4] always allows a winning reply, namely [:4]→[:3] if the remaining components add to 0, and [:4]→[:]+[3] if not. Hence the move to [:4] is loony as claimed, and [5] ≅ *(mex{0}) = *1.

The analysis of [1] through [5] shows almost all the possible behaviors in our game; continuing by induction we prove:

Theorem 1. (i) For each integer $m \geq 0$, the component [m] is equivalent to a Nim-heap of some size $\varepsilon(m)$.

(ii) A move to [:1] is loony. For each integer $m > 1$, a move to [:m] is either loony or equivalent to a move to [m-1] ≅ *(ε(m-1)). The move is loony if and only if a move to [(m-1)] is not loony and $\varepsilon(m-1) = \varepsilon(m-2)$.

(iii) For any positive integers m_1, m_2 , a move to [m₁ : m₂] is either loony or equivalent to a move to [m₁-1] + [m₂-1] = *(ε(m₁-1) +* ε(m₂-1)). The move to [m₁ : m₂] is non-loony if and only both m_1 and m_2 satisfy the criterion of (ii) for a move to [:m].

(iv) We have $\varepsilon(0) = 0$, $\varepsilon(1) = 1$, and for $m > 1$ the values $\varepsilon(m)$ are given recursively by

$$\varepsilon(m) = \text{mex}_{m_1, m_2} (\varepsilon(m_1 - 1) +* \varepsilon(m_2 - 1)).$$

Here the mex runs over pairs (m_1, m_2) of nonnegative integers such that $m_1 + m_2 = m - 1$ and a move to [m₁ : m₂] is not loony, as per the criteria in parts (ii) [for $m_1 m_2 = 0$] and (iii) [for $m_1 m_2 > 0$]. For this equation we declare that $\varepsilon(-1) = 0$.

In parts (iii) and (iv), “+*” denotes the Nim sum: $(*k) + (*k') = *(k +* k')$. Thus, once parts (i)–(iii) are known for all components with fewer than m initial files, (iv) is just the Sprague-Grundy recursion for impartial games. Once (iv) is known for all $m \leq m_0$, so is (i). The arguments for (ii) and (iii) are the same ones we used for components with up to 5 initial files. For instance, for (iii) the move [m₁ + 1 + m₂] → [m₁ : m₂] forces a choice among the continuations

$$\begin{aligned} [m_1 : m_2] &\rightarrow [m_1 - 1] + [:m_2] \rightarrow [m_1 - 1] + [m_2], \\ [m_1 : m_2] &\rightarrow [m_1 : :] + [m_2 - 1] \rightarrow [m_1 :] + [m_2 - 1]. \end{aligned}$$

If a move to [:m₁] or [:m₂] is loony then one or both of these continuations wins. Otherwise by (ii) both continuations are tantamount to [m₁ + 1 + m₂] → [m₁ - 1] + [m₂ - 1]. ♟

Carrying out the recursion for $\varepsilon(m)$, we quickly detect and prove a periodicity:

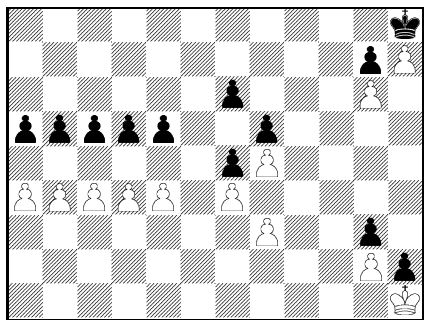
Theorem 2. *For all $m \geq 0$ we have $\varepsilon(m) = 0$ if m is congruent to 0, 2, 3, 6, or 9 mod 10, and $\varepsilon(m) = 1$ otherwise. A move to $[:m]$ is loony if and only if $m = 5k \pm 1$ for some integer k .*

Proof. Direct computation verifies the claim through $m = 23$, which suffices to prove it for all m as in [Berlekamp et al. 1982, pp. 89–90], since 23 is twice the period plus the maximum number of initial files lost by a “move” $[m] \rightarrow [m-2]$ or $[m_1 + 1 + m_2] \rightarrow [m_1 - 1] + [m_2 - 1]$. ♠

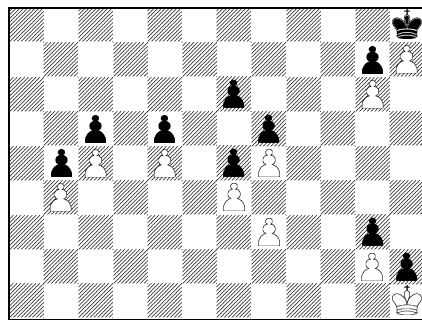
So, for instance, Diagram 2 is equivalent to $\ast(\varepsilon(7)) + \ast(\varepsilon(4)) = \ast 1 + \ast 1 = 0$ and is thus a mutual Zugzwang, a.k.a. P-position or previous-player win. The next player thus might as well play a loony move such as 1 c2, in the hope of giving the opponent Enough Rope [Berlekamp et al. 1982, p. 17]; the only correct response is 1... bxc2 (Diag. 3A) 2 bxc2 d2! (Diag. 3D), maintaining the win after either 3 exd2 exd2 (Diag. 3E) or 3 e2 (Diag 3F) fxe2! 4 fxe2.

4. Embedding into Generalized Chess

Consider Diag. 6A, a pawn endgame on a chessboard of 9 rows by 12 files:



Diag. 6A: whoever moves wins (c5!)



Diag. 6B: after 1 c5 ... 4 e5

There are four components. In each of the top right and bottom right corners, a King and three pawns are immobilized. Near the middle of the board (on the g- and h-files), we have a mutual Zugzwang with three pawns on a side; a player forced to move there will allow an opposing pawn to capture and soon advance to Queen promotion, giving checkmate. In the leftmost five files we have a pawn game with initial position [5], arranged symmetrically about the middle rank. An “immediate win” in this game is a pawn that can promote to Queen in three moves, ending the game by checkmate. We may thus assume that, as in our pawn game of the previous section, both sides play to prevent an “immediate win”, and the leftmost five files will eventually be empty or blocked. This is why we have chosen a chessboard with an odd number of rows: with an even number, as on the orthodox 8×8 board, one side’s pawns would be at least one move closer

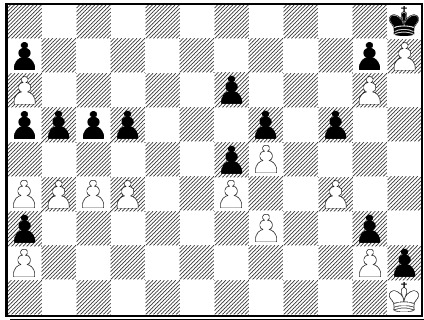
to promotion, and we would have to work harder to find positions in which, as in Diags. 1A and 1B, an “immediate win” in the pawns game by either player yields a chess win for the same player. Once play ends in the [5] component, we see why the component in the g- and h-file is needed: the Zugzwangs arising from the [m] components all end with blocked pawns, and if those were the only components on the board then the chess game would end in stalemate, regardless of which side “won” the pawns game. But, with the g- and h-files on the board, the side who lost the pawns game must move in the central Zugzwang and lose the chess game.

To see how this happens, suppose that White is to move in Diag. 6A. White must start 1 c5, the only winning move by the analysis in the previous section. Play may continue dxc5 2 dxc5 b5 (Black is lost, so tries to confuse matters with a loony move) 3 axb5 (declining the rope 3 a5? e5) axb5 4 e5 (Diag. 6B). With all other pawns blocked, Black must now play 4...g6 5 hxg6 g5. If now 6 h7? g4 ends in stalemate, so White first plays 7 gxh5 (or even 7 h4), and then promotes the pawn on g6 and gives checkmate in three more moves.

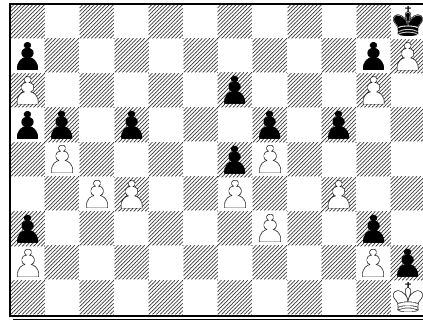
This construction clearly generalizes to show that any instance of our pawn game supported on a board of length n can be realized by a King-and-pawn endgame on any chessboard of at least $n + 6$ files whose height is an odd number greater than 5.

5. Stopped Files

By embedding our pawn game into generalized chess, we have constructed a new class of endgames that can be analyzed by combinatorial game theory. But we have still not attained our aim of finding higher Nimbers, because by Theorem 2 all the components of our endgames have value 0 or *1. To reach *2 and beyond, we modify our components by *stopping* some files. We illustrate with Diag. 7A:



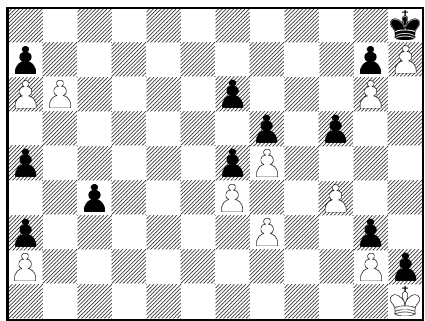
Diag. 7A: whoever moves wins



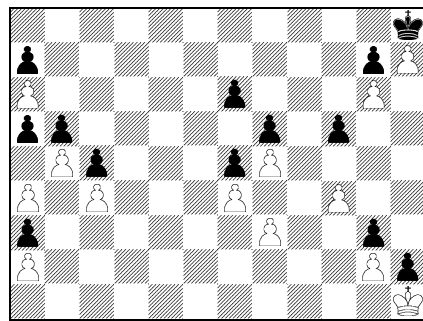
Diag. 7B: after 1 b5 cxb5 2 axb5

We have replaced the component [5] of Diag. 6A by two components. One is familiar: on the j-file (third from the right) we see [1] \cong *1. On the leftmost

four files we have a new configuration. This component looks like [4], but with four extra pawns on the a-file. These pawns are immobile, but have the effect of stopping the file on both sides, so that a White pawn reaching a6 or a Black pawn reaching a4 can no longer promote. Without these extra pawns, Diag. 7A would evaluate to $[4] + [1] \cong *1 + *1 = 0$ and would thus be a mutual Zugzwang. But Diag. 7A is a first-player win, with the unique winning move b5!. Indeed, suppose White plays b5 from Diag. 7A. If Black responds $1 \dots axb5$ then White's reply $2 axb5$ produces $[:2] + [1]$ and wins. So Black instead plays $1 \dots cxb5$, expecting the loony reply $2 cxb5$. But thanks to the stopped a-file White can improve with $2 axb5$!. See Diag. 7B. If now $2 \dots a5$, this pawn will get no further than a4, while White forces a winning breakthrough with $3 c5$, for instance $3 \dots dxc5$ $4 dxc5$ $bxc5$ $5 b6$ $c4$ $6 b7$ (Diag. 7C) and mates in two. Notice that the extra pawns on the a-file do not stop the b-file: if Black now captures the pawn on b7 then the pawn on a7 will march in its stead. We conclude that in Diag. 7B Black has nothing better than $2 \dots axb5$ $3 cxb5$, which yields the same lost position ($[1] + [1] \cong 0$) that would result from $1 \dots axb5$. After $1 b5$ Black could also try the tricky $1 \dots c5$, attempting to exploit the a-file stoppage by sacrificing the a6-pawn. After the forced $2 dxc5$ ($d5?$ $axb5$ $3 axb5$ $j5$ wins) $dxc5$ (Diag. 7D), White would indeed lose after $3 bxa6?$ $j5$, but the pretty $3 a5$! wins. However Black replies, a White pawn will next advance or capture to b6, and three moves later White will promote first and checkmate Black.

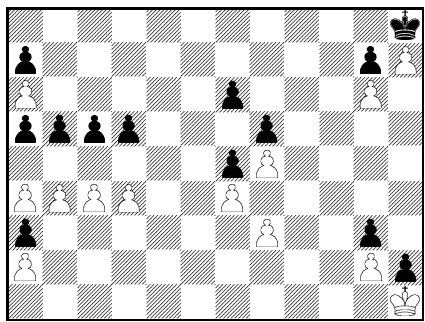


Diag. 7C: after 6 b7

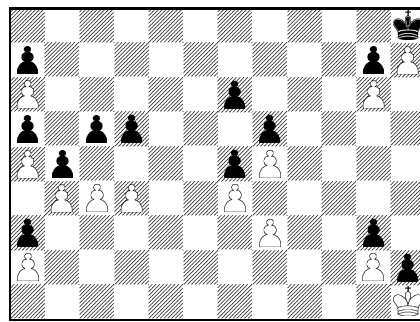
Diag. 7D: after $1 \dots c5$ $2 dxc5$ $dxc5$

Diag. 7A remains a first-player win even without the [1] component on the j-file (Diag. 7E). The first move d5 wins as in our analysis of [4]: either $cx d5$ $cx d5$ or $c5$ $bxc5$ $bxc5$ $a5$ produces a decisive Zugzwang. In fact, d5 is the only winning move in Diag. 7E. The move c5 is loony as before ($bxc5$ $bxc5$ $d5/dxc5$). With the a-file stopped, a5 is loony as well. The opponent will answer b5 (Diag. 7F), and if then $cx b5$ $ax b5$!, followed by c5 and wins while the pawn left on a5 is

useless as in Diag. 7B. This leaves (from Diag. 7F) c5, again producing the loony [:1]. Thus a5 is itself loony as claimed.



Diag. 7E: whoever moves wins



Diag. 7F: after 1 a5 b5

Therefore the component in files a–d of Diag. 7A and Diag. 7E is equivalent to an impartial game in which either side may move to either 0 (with d5) or *1 (with b5). Hence this component has the value *2! On longer boards of odd height ≥ 9 , we can stop some of the files in $[m]$ for other m . We next show that each of the resulting components is equivalent to a Nim-heap, some with values *4, *8 and beyond.

6. The Pawns game with Stopped Files

6.1. Game Definition and Components. We modify our pawn game by choosing a subset of the n files and declaring that the files in that subset are “stopped”. A pawn reaching its opposite row now scores an immediate win only if it is on an unstopped file.⁷ We require that no two stopped files be adjacent. This requirement arises naturally from our implementation of stopped files in King-and-pawn endgames on large chessboards. As it happens, the requirement is also necessary for our analysis of the modified pawns game. For instance, if adjacent stopped files were allowed then a threat to capture a pawn might not be an entailing move.

In the last section we already saw the effects of stopped files on the play of the game. We next codify our observations. We begin by extending our notation for quiescent components. In §3, such a component was entirely described by the number m of consecutive initial files that the component comprises. In the modified game, we must also indicate which if any of these m files is stopped. We denote a stopped initial file by 1, and an unstopped one by 0. A string of m binary digits, with no 1’s adjacent, then denotes a quiescent component of m initial files. To avoid confusion with our earlier notation, we use double instead of single brackets. For instance, the component we called $[m]$, with no stopped

⁷If the file is stopped, the pawn does not “promote”: it remains a pawn, and can make no further moves. Recall that this was the fate of Black’s a5-pawn in Diag. 7C.

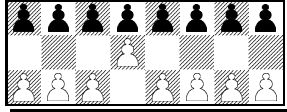
files, now becomes $[[000\dots 0]] = [[0^m]]$; the component with value $*2$ on files a–d of Diag. 7A is denoted $[[1000]]$. An initial file that may be either open or closed will be denoted i (or i_1, i_2 , etc.); an arbitrary “word” of 0’s and 1’s will be denoted w (or w', w_1, w_2 , etc.).

A component comprising just one initial file, stopped or not, still has value $\{0|0\} = *1$. In a component of at least two initial files, every move threatens to capture and is entailing. This is true even if the file(s) of the threatened pawn(s) is or are stopped, because an immediate win is then still threatened by advancing in that stopped file, as we saw in Diag. 7D where White wins by 3 a5!. (Here we need the condition that two adjacent files cannot both be stopped: if in Diag. 7D the b-file were somehow stopped as well then 3 a5 would lose to either 3... bxa5 or 3... axb5.) This remains true even in the presence of other components. For instance, if more components were added to Diagram 7B and Black played in another component, White could win immediately by capturing once or twice in that component until it became quiescent and then proceeding with c5.

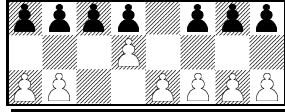
Consider first a move by the pawn on the first or last file of the component (without loss of generality: the first), attacking just one pawn. As in §3, the opponent must move the attacked pawn on the second file, either advancing it or capturing the attacking pawn. In the latter case, the pawn must be re-captured, and the sequence has the effect of removing the component’s first two files. In the latter case, the component becomes quiescent if it had only two files (in which case the first move in the component was loony, as before); otherwise the advanced pawn in turn attacks a third-file pawn, which must capture or advance. But now a new consideration enters: if the *first* file is stopped, then the capture loses immediately since the opponent will re-capture from the first file and touch down on the second, necessarily unstopped, file. (See Diag. 7F after 2 cxb5 axb5.) Note that the first file, though closed, can still affect play for one turn after its closure if it is stopped. We thus need a notation for such files, as well as stopped “:” files, which may become closed. We use an underline: a stopped “:” file will be denoted “:”, and a stopped blocked file will simply be denoted “-”. Thus the moves discussed in this paragraph are as follows, with each w denoting an arbitrary word of positive length:

- From $[[0]]$ or $[[1]]$, either side may move to 0.
- From $[[0w]]$ or $[[1w]]$, either side may move to $[[{:}w]]$ or $[[\underline{:}w]]$ respectively.
- a move to $[[{:}0]]$, $[[{:}1]]$, or $[[\underline{:}0]]$ is loony.
- $[[{:}0w]]$ entails a move to $[[{:}.] + [[w]]$ or $[[{:}w]]$; $[[\underline{:}0w]]$ entails a move to $[[\underline{:}.] + [[w]]$ or $[[\underline{:}w]]$; and $[[{:}1w]]$ entails a move to $[[{:}.] + [[w]]$ or $[[\underline{:}w]]$. Each of $[[{:}.]$ and $[[\underline{:}.]$ entails a move to 0.
- $[[\underline{:}0]]$ or $[[\underline{:}1]]$ entails a move to 0; and $[[\underline{:}0w]]$ or $[[\underline{:}1w]]$ entails a move to $[[{:}w]]$ or $[[\underline{:}w]]$ respectively.

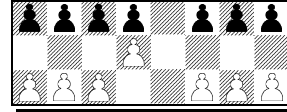
It remains to consider a pawn move in the interior of a quiescent component. Such a move attacks two of the opponent's pawns, and entails a capture. If neither of the attacked pawns is on a stopped file, then either of them may capture, forcing a re-capture from the same file, just as in the pawn game without stopped files. If both pawns are on stopped files (see Diag. 8A), then a capture from either of these files can be met by a capture from the other file (Diag. 8B), forcing a further capture and re-capture to avoid immediate loss. The first player may also choose to make the first re-capture from the same file (Diag. 8C), but we can ignore this possibility because the opponent can still re-capture again to produce the same position as before, but has the extra option of advancing the attacked pawn.



Diag. 8A (c, e files blocked)



Diag. 8B



Diag. 8C

Finally, if just one of the two attacked pawns lies on an unstopped file, it may as well capture, forcing a re-capture in the same file: capturing with the other pawn lets the first player capture from the stopped file, forcing a further capture and re-capture to avoid immediate loss, and thus denying the opponent the option to capture with one attacked pawn and then advance the other. We next summarize the moves discussed in this paragraph that we did not list before. Here w, w_1, w_2 again denote arbitrary words, which may be empty (length zero) except for the first item:

- From $[[w_1 0 w_2]]$ or $[[w_1 1 w_2]]$ with w_1, w_2 of positive length, either side may move to $[[w_1 : w_2]]$ or $[[w_1 ; w_2]]$ respectively.
- $[[w_1 i_1 : i_2 w_2]]$ entails a move to $[[w_1] + [[:i_2 w_2]]]$ or $[[w_1 i_1 \cdot] + [[w_2]]]$; likewise, $[[w_1 0 1 w_2]]$ entails a move to $[[w_1 0] + [[:w_2]]]$ or $[[w_1 \cdot] + [[0 w_2]]]$.
- $[[\cdot : w]]$ entails a move to $[[: w]]$; likewise, $[[\cdot ; w]]$ entails a move to $[[; w]]$.
- A move to $[[w_1 1 : 1 w_2]]$ is equivalent to a move to $[[w_1] + [[w_2]]]$.
- A move to $[[w_1 1 : 0 w_2]]$ is equivalent to a move to $[[w_1] + [[: 0 w_2]]]$.

Only the last two cases are directly affected by stopped files.

6.2. Reduction to Nim. Even with stopped files it turns out that our pawn game still reduces to an impartial game, and thus to Nim, once immediately losing and loony moves are eliminated:

Theorem 3. (i) *Each component $[[w]]$ is equivalent to a Nim-heap of some size $\varepsilon(w)$.*

(ii) *A move to $[[: i]]$, or $[[; 0 i]]$ is loony. For each w of positive length, a move to $[[: i w]]$ is either loony or equivalent to a move to $[[w]] \cong * \varepsilon(w)$. The move to*

$[[:0w]]$ or $[[:1w]]$ is loony if and only if a move to $[[[:w]]]$ or $[[[:w]]]$ respectively is not loony and is equivalent to a move to $*\varepsilon(w)$. For each w of positive length, a move to $[[[:0iw]]]$ is either loony or equivalent to a move to $[[iw]] \cong *\varepsilon(iw)$. The move to $[[[:00w]]]$ or $[[[:01w]]]$ is not loony if and only if a move to $[[[:w]]]$ or $[[[:w]]]$ respectively is not loony and is equivalent to a move to $*(0w)$ or $*(1w)$.

(iii) For any words w_1, w_2 , a move to $[[w_10:0w_2]]$ or $[[w_10:0w_2]]$ is either loony or equivalent to a move to $[[w_1]] + [[w_2]] = *(\varepsilon(w_1) + \varepsilon(w_2))$. The move to $[[w_10:0w_2]]$ is non-loony if and only both w_1 and w_2 satisfy the criterion of (ii) for a move to $[[[:0w]]]$ to be non-loony. Likewise, the move to $[[w_10:0w_2]]$ is non-loony if and only both w_1 and w_2 satisfy the criterion of (ii) for a move to $[[[:0w]]]$ to be non-loony.

(iv) The function ε from strings of 0's and 1's with no consecutive 1's to non-negative integers is recursively determined by (ii) and (iii): $\varepsilon(i) = 1$, and for w of length > 1 the value $\varepsilon(w)$ is the mex of the values of the Nim equivalents of all non-loony moves as described in (ii), (iii).

Proof. This is proved in exactly the same way as Theorem 1. Note that we do not evaluate moves to $[[[:w]]]$. Such a move is available only if the opponent just moved to $[[[:0w]]]$. If that move was loony then we win, capturing unless the other components sum to $\varepsilon(w)$ in which case we advance, forcing the opponent to advance in return and winning whether that forced advance was loony or not. If the opponent's move to $[[[:0w]]]$ was not loony then capturing or advancing our attacked pawn yields equivalent positions. ♠

6.3. Numerical Results. Theorem 3 yields a practical algorithm for evaluating $\varepsilon(w)$. If w has length m , the recursion in (iv) requires $O(m^2 \log m)$ space, to store $\varepsilon(w')$ as it is computed for each substring w' of consecutive bits of w , and $O(m^3)$ table lookups and nim-sums, to recall each $\varepsilon(w')$ as it is needed and combine pairs. Unlike the situation for the simple game with no files stopped, where we obtained a simple closed form for $\varepsilon(m)$ (Theorem 2), here we do not know such a closed form. We can, however implement the $O(m^3)$ algorithm to compute $\varepsilon(w)$ for many w . We conclude this paper with a report on the results of several such computations and our reasons for believing that $\varepsilon(w)$ can be arbitrarily large.

We saw already that $\varepsilon(1000) = 2$; this is the unique w of minimal length such that $[w]$ has value $*2$, except that the reversal $[[0001]]$ of $[[1000]]$ has the same value. Clearly $[[0]]$ and $[[1]]$ are the smallest instances of $*1$. We first find $*4$, $*8$ and $*16$ at lengths 9, 20, and 43, for $w = 101001000$, 10100100010100001000 , $1010010001000000010100010000000101000100101$, among others. The following table lists for each $k \leq 16$ the least m such that $\varepsilon(w) = k$ for some word w of length m :

k	1	2	3	4	5	6	7	8	9	10	11	12	13	14	15	16
m	1	4	6	9	11	14	16	20	22	25	27	30	32	37	39	43

It seems that, for each k , instances of $*k$ are quite plentiful as m grows. The following table gives for each $35 \leq m \leq 42$ the proportion of length- m words w with $\varepsilon(w) = 0, 1, 2, \dots, 9$, rounded to two significant figures:⁸

m	0	1	2	3	4	5	6	7	8	9
35	24%	26%	19%	15%	5.4%	5.7%	2.7%	2.5%	.51%	.25%
36	22%	27%	18%	15%	5.5%	5.7%	2.6%	2.8%	.54%	.27%
37	26%	22%	14%	19%	5.8%	5.5%	2.8%	2.8%	.55%	.31%
38	25%	23%	16%	17%	5.7%	5.7%	3.1%	2.7%	.56%	.35%
39	22%	26%	19%	14%	5.6%	5.9%	3.0%	3.0%	.59%	.37%
40	24%	24%	16%	18%	5.9%	5.7%	3.0%	3.2%	.61%	.40%
41	26%	22%	15%	19%	5.9%	5.8%	3.3%	3.1%	.61%	.44%
42	22%	24%	18%	15%	5.8%	6.0%	3.3%	3.2%	.63%	.47%

Especially for $*0$ through $*3$, the proportions seem to be bounded away from zero but varying quite erratically with m . The small proportions of $*6$ through $*9$ appear to rise slowly but not smoothly. We are led to guess that for each k there are length- m components of value $*k$ once m is large enough—perhaps $m \gg k$ suffices—and ask for a description and explanation of the proportion of components of value $*k$ among all components of length m . In particular, is it true for each k that this proportion is bounded away from zero as $m \rightarrow \infty$?

It is well known that the number of binary words of length m without two consecutive 1's is the $(m + 2)$ -nd Fibonacci number. This number grows exponentially with m , soon putting an end to exhaustive computation. We do not expect to be able to extend such computations to find the first $*32$, which probably occurs around $m = 90$. Nevertheless we have reached $*32$ and much more by computing $\varepsilon(w)$ for periodic w of small period p . This has the computational advantage that for each $m' < m$ we have at most p substrings of length m' to evaluate, rather than the usual $m + 1 - m'$.⁹

We have done this for various small p . Often the resulting Nim-values settle into a repeating pattern, of period p or some multiple of p . This is what happened in Theorem 2 for $p = 1$, with period $10p$. Usually the multiplier is smaller than 10, though blocking files $14r$ and $14r + 5$ produces a period of $504 = 36 \cdot 14$.

All repeating patterns with $p \leq 4$ soon become periodic, but for larger p some choices of pattern yield large and apparently chaotic Nim-values. For instance, we have reached $*4096$ by blocking every sixth file in components of length up to $2 \cdot 10^5$. For each $\alpha = 3, 4, \dots, 12$ the shortest such component of value $*(2^\alpha)$

⁸To compute such a table takes only $O(m)$ basic operations for each choice of w , rather than $O(m^3)$, because $\varepsilon(w')$ has already been computed for each substring w' —this as long as one has enough space to store $\varepsilon(w')$ for all w' of length at most $m - 2$.

⁹Once this is done for some period- p pattern, one can also efficiently evaluate components with the same repeated pattern attached to any initial configuration of blocked and unblocked files. We have not yet systematically implemented this generalization.

has files $6r + 4$ blocked, with length n given by the following table:

α	3	4	5	6	7	8	9	10	11	12
n	51	111	202	497	1414	3545	8255	21208	61985	187193

This again suggests that all $*k$ arise: even if the Nim-values for $p = 6$ ultimately become periodic, we can probably re-introduce chaos by blocking or unblocking a few files. Of course we have no idea how to prove that arbitrarily large k appear this way.

Finally, for a few repeating patterns we observe behavior apparently intermediate between periodicity and total chaos. Blocking every fifth or tenth file yields Nim-values that show some regularity without (yet?) settling into a period. Indeed in both cases the largest values grow as far as we have extended the search (through length 10^5), though more slowly and perhaps more smoothly than for $p = 6$. Such families of components seem the most likely place to find and prove an arithmetic periodicity or some more complicated pattern that finally proves that all $*k$ arise and thus fully embeds Nim into generalized King-and-pawn endgames.

Acknowledgements

This paper was typeset in L^AT_EX, using Piet Tutelaers' chess fonts for the Diagrams. The research was made possible in part by funding from the Packard Foundation. I thank the Mathematical Sciences Research Institute for its hospitality during the completion of an earlier draft of this paper, and Andrew Buchanan for a careful reading of and constructive comments on that draft.

References

- [Berlekamp et al. 1982] E.R. Berlekamp, J.H. Conway, R.K. Guy: *Winning Ways For Your Mathematical Plays, I: Games In General*. London: Academic Press, 1982.
- [Clarke 1968] A. Clarke: *2001, A Space Odyssey*. London: Legend, 1968 (reprinted 1991).
- [Elkies 1996] N.D. Elkies: *On numbers and endgames: Combinatorial game theory in chess endgames*. Pages 135–150 in *Games of No Chance* (R.J. Nowakowski, ed.; MSRI Publ. **29**, 1996 via Cambridge Univ. Press; proceedings of the 7/94 MSRI conference on combinatorial games).

NOAM D. ELKIES
 DEPARTMENT OF MATHEMATICS
 HARVARD UNIVERSITY
 CAMBRIDGE, MA 02138
 UNITED STATES
 elkies@math.harvard.edu